

New In-ground lights

ROLF WINTER
CHAMP[®]
LICHT



 made
in
Germany



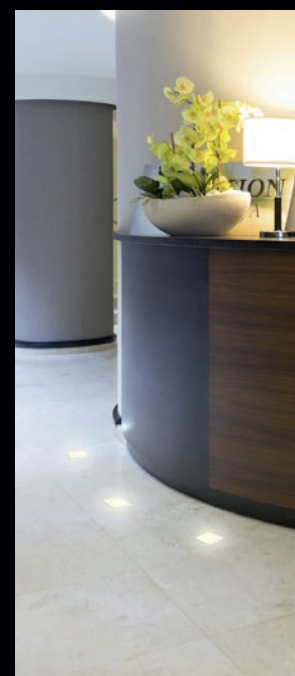
SQIL FLATPACK

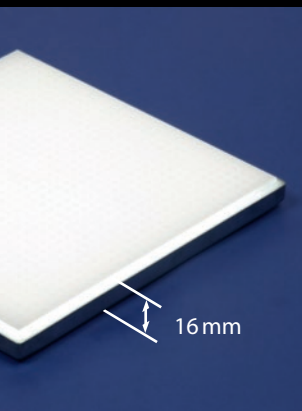


The ultra-flat rectangular LED luminaire for indoor and outdoor use: With a total installation depth of only 16 mm, it can be integrated into almost any floor. With its high light output, matt surface and anti-slip coating, it is also suitable for impressive illumination of larger areas.

Technical data

Connection::	SQIL 109 strands 2 m	SQIL 202 strands 2 m
Operating voltage:	12VDC	12VDC
Dimensions:	109 x 109 mm	202 x 202 mm
Mounting depth:	16 mm +/- 0.5 mm	16 mm +/- 0.5 mm
Recommended LED service life:	60,000 h	60,000 h
Power consumption:	4.2W	16.5 W
Light colors:	neutral white (other colors on request)	neutral white (other colors on request)
Material/pane:	stainless steel/ tempered glass with ceramic anti-slip coating	stainless steel/ tempered glass with ceramic anti-slip coating
Type of protection:	IP67 / IK10	IP67 / IK10





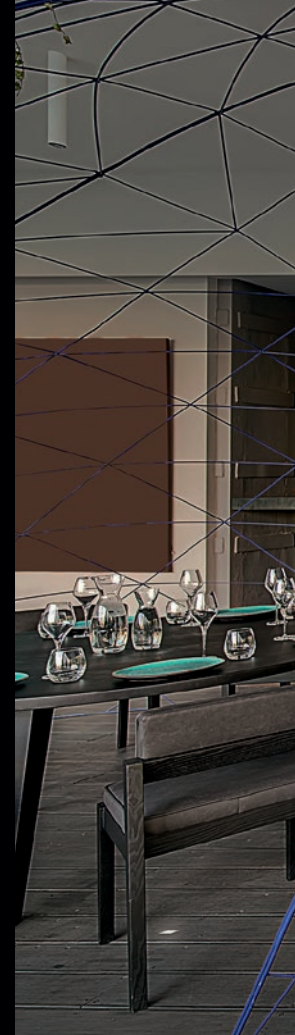


COLIBRI PL 50

An LED cube with 5 cm edge length, matt, with a smooth surface - this is the versatile Colibri PL 50. Thanks to its robust construction, it can also withstand driving over with heavy vehicles.

Technical data

Operating voltage:	12VDC
Power consumption:	0.25 W
Dimensions:	50 x 50 x 50 mm
Material:	Polycarbonate UV-stabilized
Type of protection:	IP 44 (IP 67 when the terminal space is filled with silicone)
Connection:	Push-in-Clamps for inserting wires or fine-strands 0.2 - 0.75 mm ² (AWG 24-18)
Light colors:	Neutral white, blue, green, yellow, red





COLIBRI ST 50



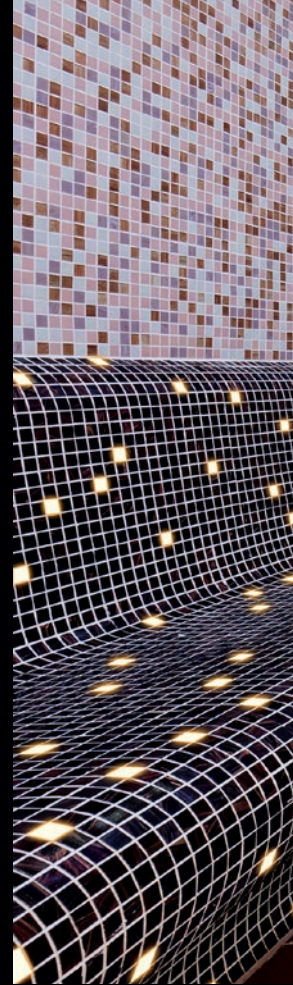
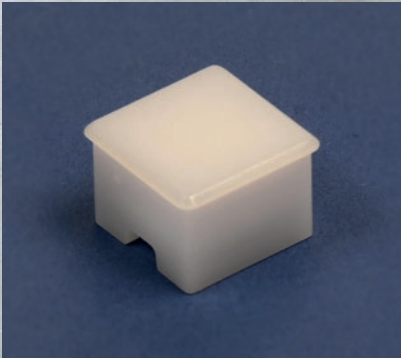
The Colibri ST 50 differs from its sister model PL 50 by its irregular surface, which is based on a broken stone structure. This makes it particularly suitable for integration in paved areas and natural stone. Due to the surface structure, it is applied 2 millimetres higher.

Technical data

Operating voltage:	12VDC
Power consumption:	0.25 W
Dimensions:	50 x 50 x 52 mm
Material:	Polycarbonate UV-stabilized
Type of protection:	IP 44 (IP 67 when the terminal space is filled with silicone)
Connection:	Push-in-Clamps for inserting wires or fine-strands 0.2 - 0.75 mm ² (AWG 24-18)
Light colors:	Neutral white, blue, green, yellow, red



SQ20 Mosaic



The SQ20 Mosaic appears subjectively brighter than the Colibri models because it has an identical light output with a side length of only 22 millimetres and an installation height of 15.2 millimetres. With its matt, smooth surface, it is ideal as a light stone in tile mosaics. It can be used in wet rooms without any problems.

Technical data

Operating voltage:	12 VDC
Power consumption:	0.25 W
Dimensions:	22 x22 x 15.2 mm
Mounting hole:	20 x20 mm
Material:	Polycarbonate UV-stabilized
Type of protection:	IP 44 (IP 67 when the terminal space is filled with silicone)
Connection:	Push-in-Clamps for inserting wires or fine-strands 0.2 - 0.75 mm ² (AWG 24-18)
Light colors:	Neutral white, blue, green, yellow, red





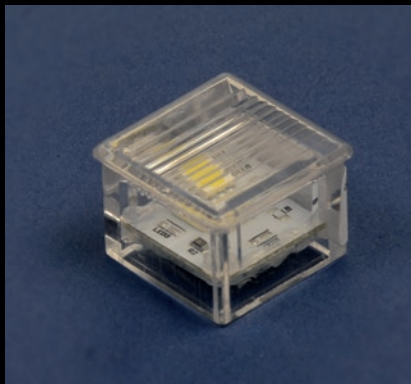


SQ20 Beam

In contrast to the glare-free SQ20 Mosaic, the SQ20 Beam has a clear surface with light guide fins and is therefore significantly brighter. It is used wherever a higher luminous efficacy is expressly desired, for example as lateral staircase lighting.

Technical data

Operating voltage:	12 VDC
Power consumption:	0.25 W
Dimensions:	22 x 22 x 15.2 mm
Mounting hole:	20 x 20 mm
Material:	Polycarbonate UV-stabilized
Type of protection:	IP 44 (IP 67 when the terminal space is filled with silicone)
Connection:	Push-in-Clamps for inserting wires or fine-strands 0.2 - 0.75 mm ² (AWG 24-18)
Light colors:	Neutral white, blue, green, yellow, red



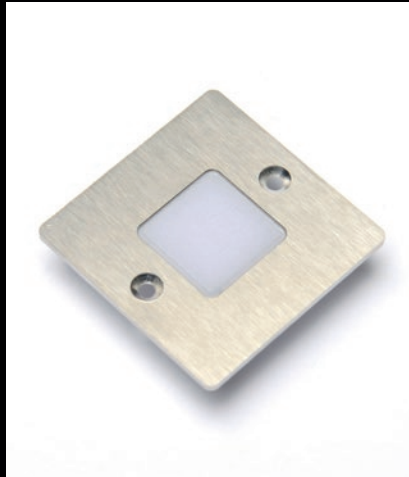


LEVA 50 DIFFUSE

Stainless steel LED light with diffused light emission for recessed installation in floor, ceiling, wall etc.
Weather resistant, therefore suitable for indoor and outdoor.

Technical data

Operating voltage:	12 VDC
Power consumption:	0.25 W
Dimensions:	50 x 50 x 15 mm
Mounting hole:	22 x 22 mm
Material:	Stainless steel + Polycarbonate UV-stabilized
Type of protection:	IP 44 (IP 67 when the terminal space is filled with silicone)
Connection:	Push-in-Clamps for inserting wires or fine-strands 0.2- 0.75 mm ² (AWG 24- 18)
Light colors:	Neutral white, blue, green, yellow, red





LEVA 50 BEAM

Stainless steel LED light with a light emission of about 80° asymmetric for recessed mounting, e.g. for step / stair lighting or similar small lighting tasks.

Weather resistant, therefore suitable for indoor and outdoor.

Technical data

Operating voltage:	12 VDC
Power consumption:	0.25 W
Dimensions:	50 x 50 x 15 mm
Mounting hole:	22 x 22 mm
Material:	Stainless steel + Polycarbonate UV-stabilized
Type of protection:	IP 44 (IP 67 when the terminal space is filled with silicone)
Connection:	Push-in-Clamps for inserting wires or fine-strands 0.2- 0.75 mm ² (AWG 24- 18)
Light colors:	Neutral white, blue, green, yellow, red



ROLF WINTER
CHAMP[®]
LICHT

Data Sheets at:
www.champ-licht.com



© CHAMP - 05/2019 - subject to alteration

