

New In-ground lights

ROLF WINTER
CHAMP[®]
LICHT



 made
in
Germany

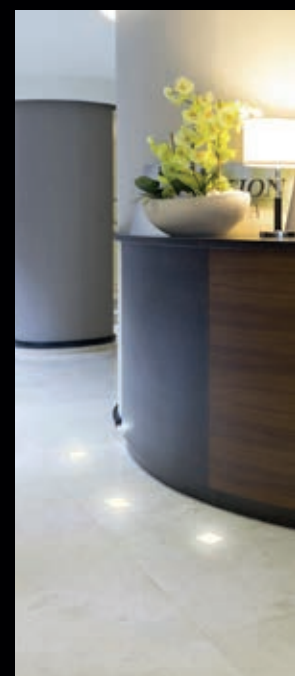


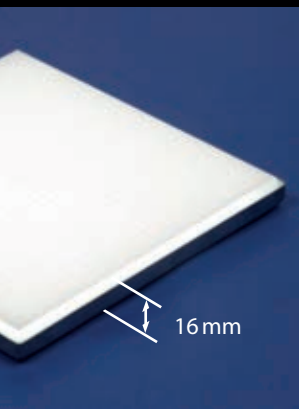
SQL FLATPACK

The ultra-flat rectangular LED luminaire for indoor and outdoor use: With a total installation depth of only 16 mm, it can be integrated into almost any floor. With its high light output, matt surface and anti-slip coating, it is also suitable for impressive illumination of larger areas.

Technical data

Connection::	SQL 109 strands 2 m	SQL 202 strands 2 m
Operating voltage:	12VDC	12VDC
Dimensions:	109 x 109 mm	202 x 202 mm
Mounting depth:	16 mm +/- 0.5 mm	16 mm +/- 0.5 mm
Recommended LED service life:	60,000 h	60,000 h
Power consumption:	4.2W	16.5 W
Light colors:	neutral white (other colors on request)	neutral white (other colors on request)
Material/pane:	stainless steel/ tempered glass with ceramic anti-slip coating	stainless steel/ tempered glass with ceramic anti-slip coating
Type of protection:	IP67 / IK10	IP67 / IK10







COLIBRI PL 50

An LED cube with 5 cm edge length, matt, with a smooth surface - this is the versatile Colibri PL 50. Thanks to its robust construction, it can also withstand driving over with heavy vehicles.

Technical data

Operating voltage:	12VDC
Power consumption:	0.25 W
Dimensions:	50 x 50 x 50 mm
Material:	Polycarbonate UV-stabilized
Type of protection:	IP 44 (IP 67 when the terminal space is filled with silicone)
Connection:	Push-in-Clamps for inserting wires or fine-strands 0.2 - 0.75 mm ² (AWG 24-18)
Light colors:	Neutral white, blue, green, yellow, red





COLIBRI ST 50



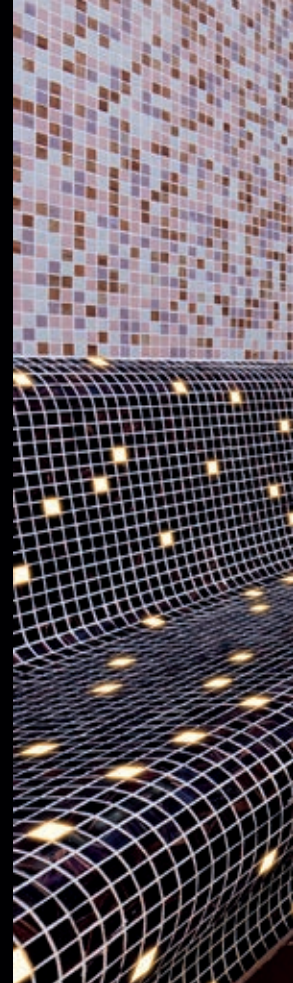
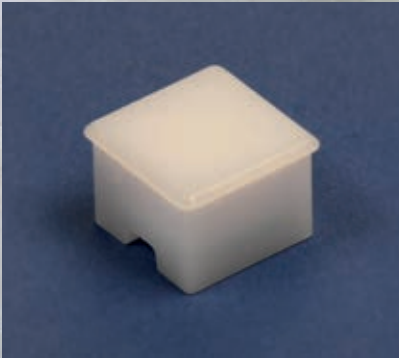
The Colibri ST 50 differs from its sister model PL 50 by its irregular surface, which is based on a broken stone structure. This makes it particularly suitable for integration in paved areas and natural stone. Due to the surface structure, it is applied 2 millimetres higher.

Technical data

Operating voltage:	12VDC
Power consumption:	0.25 W
Dimensions:	50 x 50 x 52 mm
Material:	Polycarbonate UV-stabilized
Type of protection:	IP 44 (IP 67 when the terminal space is filled with silicone)
Connection:	Push-in-Clamps for inserting wires or fine-strands 0.2 - 0.75 mm ² (AWG 24-18)
Light colors:	Neutral white, blue, green, yellow, red



SQ20 Mosaic



The SQ20 Mosaic appears subjectively brighter than the Colibri models because it has an identical light output with a side length of only 22 millimetres and an installation height of 15.2 millimetres. With its matt, smooth surface, it is ideal as a light stone in tile mosaics. It can be used in wet rooms without any problems.

Technical data

Operating voltage:	12 VDC
Power consumption:	0.25 W
Dimensions:	22 x22 x 15.2 mm
Mounting hole:	20 x20 mm
Material:	Polycarbonate UV-stabilized
Type of protection:	IP 44 (IP 67 when the terminal space is filled with silicone)
Connection:	Push-in-Clamps for inserting wires or fine-strands 0.2 - 0.75 mm ² (AWG 24-18)
Light colors:	Neutral white, blue, green, yellow, red







SQ20 Beam

In contrast to the glare-free SQ20 Mosaic, the SQ20 Beam has a clear surface with light guide fins and is therefore significantly brighter. It is used wherever a higher luminous efficacy is expressly desired, for example as lateral staircase lighting.

Technical data

Operating voltage:	12 VDC
Power consumption:	0.25 W
Dimensions:	22 x 22 x 15.2 mm
Mounting hole:	20 x 20 mm
Material:	Polycarbonate UV-stabilized
Type of protection:	IP 44 (IP 67 when the terminal space is filled with silicone)
Connection:	Push-in-Clamps for inserting wires or fine-strands 0.2 - 0.75 mm ² (AWG 24-18)
Light colors:	Neutral white, blue, green, yellow, red



ROLF WINTER
CHAMP[®]
LICHT

Data Sheets at:
www.champ-licht.com



© CHAMP - 09/2018 - subject to alteration

